



GOODMAN TSUEN WAN CENTRE

嘉民荃灣中心

Well equipped warehouse facilities in prime location
交通完善 一級設施

KEY PROPERTY FEATURES:

Sub-divisible units available

可分間單位面積

Functional loading and unloading spaces over two floors

設貨物起卸台於兩樓層，供貨車及貨櫃車使用

11 cargo lifts and two high speed passenger lifts

備有11部載貨升降機及2部客用高速升降機

Conveniently located with easy access to port, rail and arterial roads

地點優越，鄰近貨櫃碼頭、鐵路及主幹道交匯點



11MIN

walk to Tsuen Wan West MTR
步行至荃灣西港鐵站



19MIN

drive to HK International Airport
行車至香港國際機場



6MIN

drive to Container Terminal
行車至貨櫃碼頭



34MIN

drive to Man Kam To
行車至文錦渡

PLANS

規劃

539,700 SQ FT

平方呎

Total Gross Area (sq ft)
總建築面積 (平方呎)

Floor plate (sq ft)
每層樓面面積 (平方呎)

2,465-23,221

Ceiling height (ft/m)
樓高 (呎/米)

15 / 4.45

Floor loading capacity (lbs/sq ft)
樓面負重量 (磅 / 平方呎)

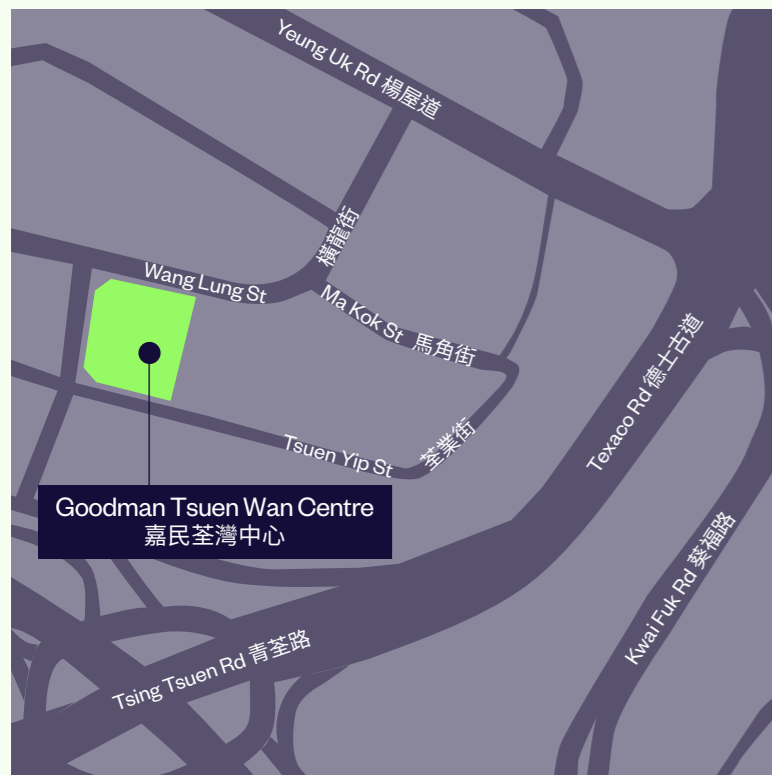
270

No. of cargo lifts
載貨升降機

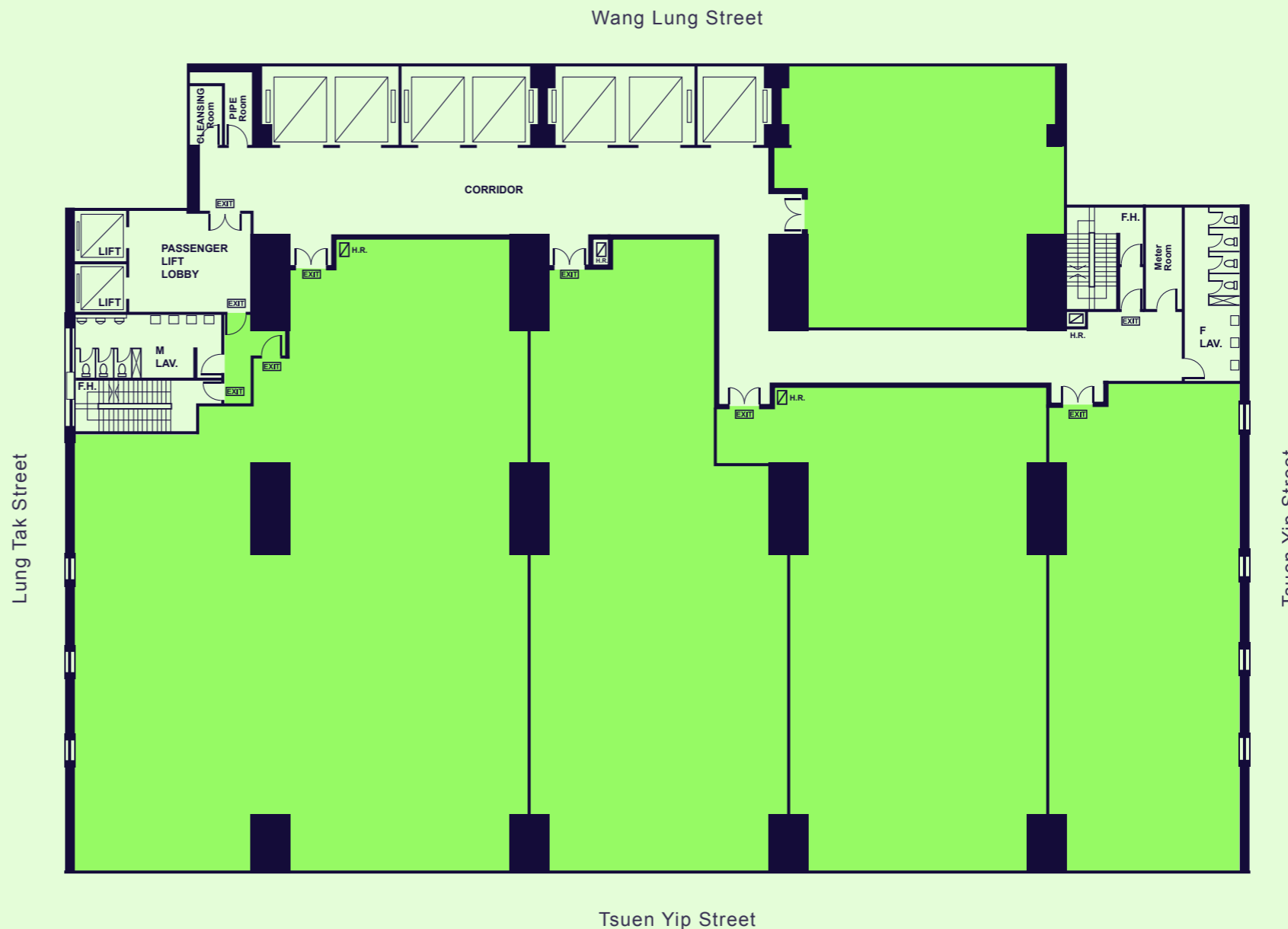
11

Cargo lift loading capacity (kg)
載貨升降機負重量 (公斤)

3,000



Typical floor plan 平面圖



Disclaimer 免責聲明:

This document has been prepared by Goodman Asia Limited for general information purposes only. Whilst every care has been taken in relation to its accuracy, no warranty of accuracy is given or implied. Interested parties should obtain independent advice before making any decisions about the property referred to in this document. Images contained in this document have been used to enable the visualisation of the building concepts only.

本文件由Goodman Asia Limited ("Goodman")製作，內容僅供作一般參考之用。Goodman已竭力確保文件所提供之資料準確，但對於資料之準確度，Goodman並不作任何承諾或保證。對本文件所提及之物業有興趣之人士，須自行尋求獨立專業人士提供意見。而本文件所刊載之圖片，只供作瞭解物業概念之用。

Leasing hotline
租務熱線

2249 3188
leasing.hk@goodman.com

hk.goodman.com

