



GOODMAN TUEN MUN DISTRIBUTION CENTRE

嘉民屯門物流中心

Functional and efficient warehouse space
間格靈活 實用空間

KEY PROPERTY FEATURES:

Large floor plate from 28,520 sq ft to 32,101 sq ft
每層面積由28,520平方呎至32,101平方呎

Functional loading and unloading spaces over two levels
設貨物起卸台於兩樓層供貨車及貨櫃車使用

19 cargo lifts and six high speed passenger lifts
備有19部載貨升降機及6部客用高速升降機

Close to Tuen Mun MTR station
鄰近港鐵屯門站



11MIN

walk to Tuen Mun MTR
步行至屯門港鐵站



24MIN

drive to Container Terminal
行車至貨櫃碼頭



18MIN

drive to HK International Airport
行車至香港國際機場



26MIN

drive to Lok Ma Chau
行車至落馬洲

PLANS

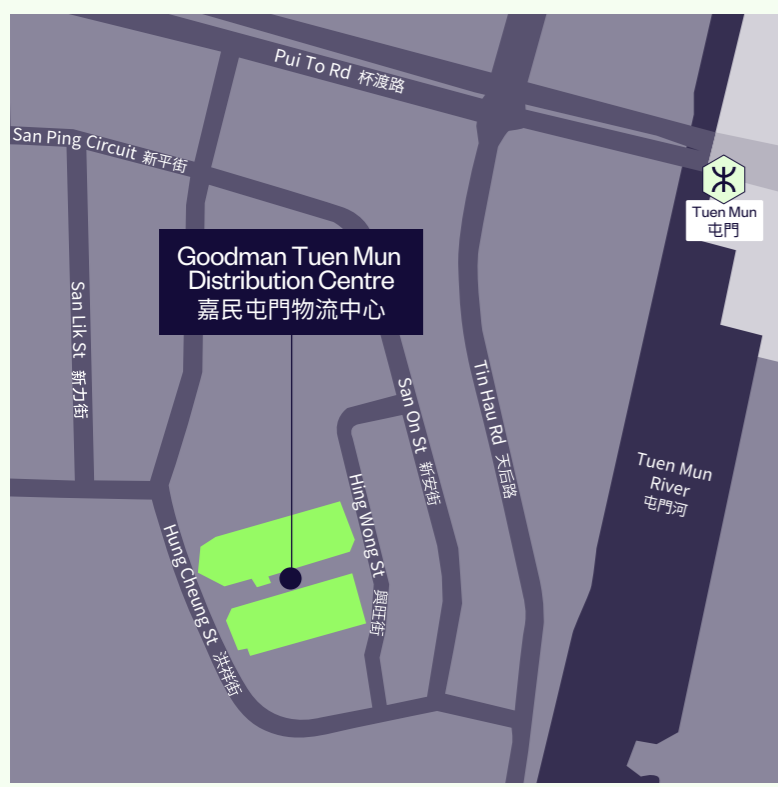
規劃

1,030,600 SQ FT

平方呎

Total Gross Area (sq ft)
總建築面積 (平方呎)

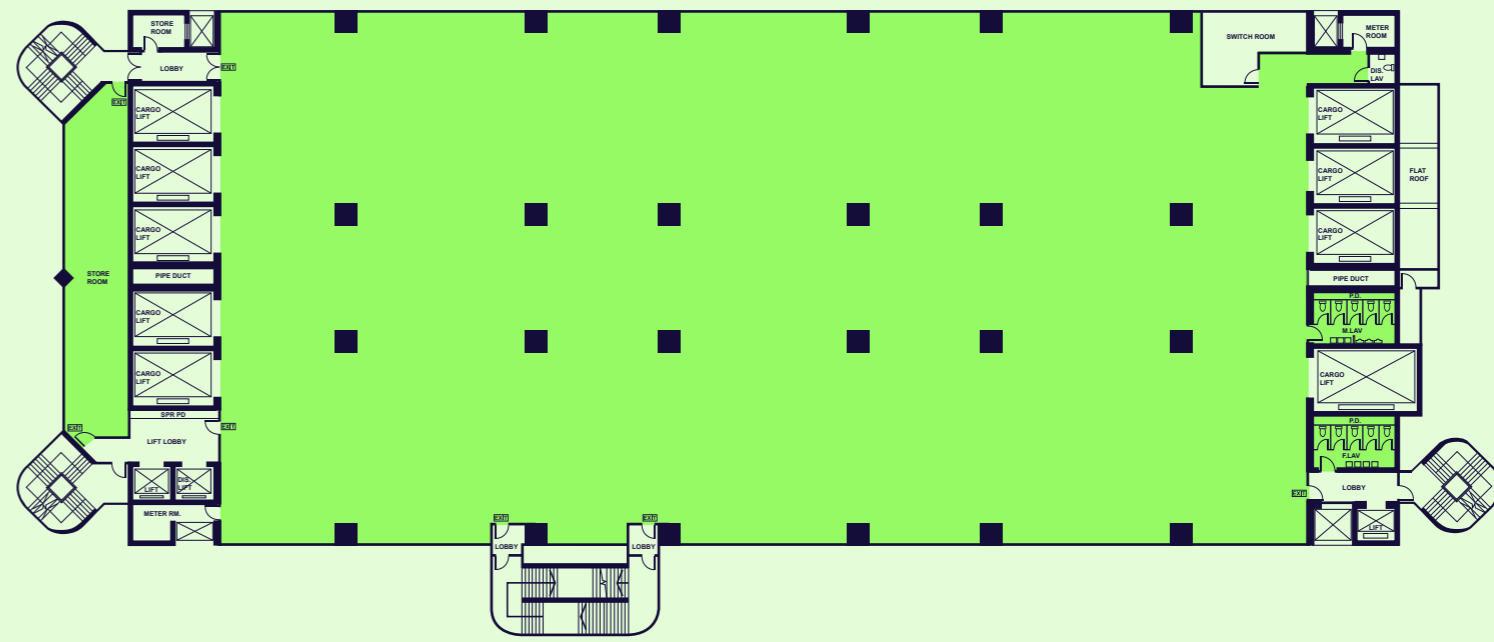
| | |
|---|---------------------|
| Floor plate (sq ft) 每層樓面面積 (平方呎) | 28,520-32,101 |
| Ceiling height (ft/m) 樓高 (呎/米) | 12.5-19 / 3.80-5.80 |
| Floor loading capacity (lbs/sq ft) 樓面負重量 (磅 / 平方呎) | 150-300 |
| No. of cargo lifts 載貨升降機 | 19 |
| Cargo lift loading capacity (kg) 載貨升降機負重量 (公斤) | 2,500-6,000 |



Typical floor plan 平面圖



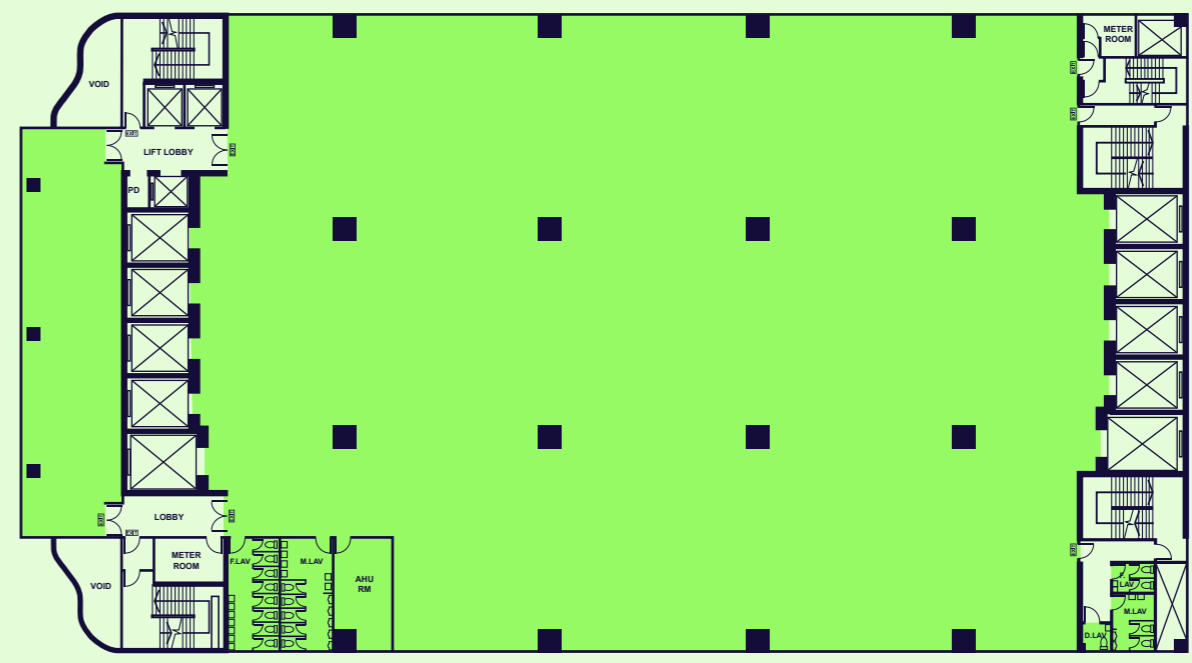
Block 1
一座



Hung Cheung Road

Hing Wong Road

Block 2
二座



Disclaimer 免責聲明:

This document has been prepared by Goodman Asia Limited for general information purposes only. Whilst every care has been taken in relation to its accuracy, no warranty of accuracy is given or implied. Interested parties should obtain independent advice before making any decisions about the property referred to in this document. Images contained in this document have been used to enable the visualisation of the building concepts only.

本文件由Goodman Asia Limited (“Goodman”)製作，內容僅供作一般參考之用。Goodman已竭力確保文件所提供之資料準確，但對於資料之準確度，Goodman並不作任何承諾或保證。對本文件所提及之物業有興趣之人士，須自行尋求獨立專業人士提供意見。而本文件所刊載之圖片，只供作瞭解物業概念之用。

Leasing hotline
租務熱線

2249 3188
leasing.hk@goodman.com

hk.goodman.com

